

Falk Quadrive Motor Mount and Belt Guard

UPDATE GUIDE



Download the most up-to-date version
at rexnord.com/documentation

Falk Quadrive **Motor Mount Update** Guide

I have a new application and I need a motor mount...

Unit Size	NEMA Frame Size					
	56-215	254-256	284-286	324-326	364-365	404-405
5107	7708118	-	-	-	-	-
5115	7708120	7708122	-	-	-	-
5203	7708124	7708126	7708126	-	-	-
5207	7708127	7708128	7708128	7708129	-	-
5215	7708130	7708131	7708131	7708132	7708132	-
5307	7708133	7708134	7708134	7708135	7708135	7708136
5315	7708133	7708134	7708134	7708135	7708135	7708136

I am already buying a motor mount, what is my new part number?

Unit Size	If you were buying this...		...now you will buy this:	
	Description	Part Number	Description	Part Number
5107	MM5107J-1	738714	MM5107J-1	7708118
5115	MM5115J-1	738715	MM5115J-1	7708120
5115	MM5115J-2	786773	MM5115J-2	7708122
5203	MM5203J-1	738716	MM5203J-1	7708124
5203	MM5203J-2	786108	MM5203J-2	7708126
5207	MM5207J-1	738718	MM5207J-1	7708127
5207	MM5207J-2	786176	MM5207J-2	7708128
5207	MM5207J-2	786176	MM5207J-3	7708129
5215	MM5215J-1	738720	MM5215J-1	7708130
5215	MM5215J-2	786261	MM5215J-2	7708131
5215	MM5215J-2	786261	MM5215J-3	7708132
5307	MM5307J-1	738468	MM5307J-1	7708133
5307	MM5307J-2	786373	MM5307J-2	7708134
5307	MM5307J-2	786373	MM5307J-3	7708135
5307	MM5307J-2	786373	MM5307J-4	7708136
5315	MM5315J-1	738468	MM5315J-1	7708133
5315	MM5315J-2	786373	MM5315J-2	7708134
5315	MM5315J-2	786373	MM5315J-3	7708135
5315	MM5315J-2	786373	MM5315J-4	7708136



Falk Quadrive Belt Guard Selection Guide

I have a new application and need a belt guard...

Selecting a Belt Guard Normally

1. Determine the unit to be used
2. Determine the mounting height (CSML)
3. Determine the NEMA motor frame size
4. Determine the maximum sheave diameter (<11" or <17")

5107			
Height	Motor	Sheave < 11"	Sheave < 17"
C	56-215	28	-
SML	56-215	36N	36W

5115			
Height	Motor	Sheave < 11"	Sheave < 17"
C	56-184	28	-
C	213-256	36N	36W
S	56-256	36N	36W
M	56-215	36N	42W
M	254-256	42N	42W
L	56-215	42N	42W
L	254-256	48N	48W

5203			
Height	Motor	Sheave < 11"	Sheave < 17"
C	56-184	28	-
C	213-286	36N	36W
S	56-215	36N	36W
S	254-256	36N	42W
S	284-286	42N	42W
M	56-145	36N	42W
M	182-286	42N	42W
L	56-145	42N	42W
L	182-215	42N	48W
L	254-286	48N	48W

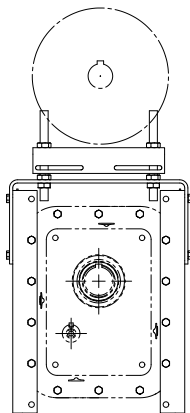
5207			
Height	Motor	Sheave < 11"	Sheave < 17"
S	56-184	36N	36W
S	213-256	36N	42W
S	284-326	42N	42W
M	56-145	36N	42W
M	182-256	42N	42W
M	284-326	42N	48W
L	56-184	42N	48W
L	213-326	48N	48W

5215			
Height	Motor	Sheave < 11"	Sheave < 17"
S	56-215	36N	42W
S	254-326	42N	42W
S	364-365	42N	48W
M	56-145	42N	42W
M	182-215	42N	48W
M	254-365	48N	48W
L	56-215	48N	48W
L	254-256	48N	54
L	284-365	-	54

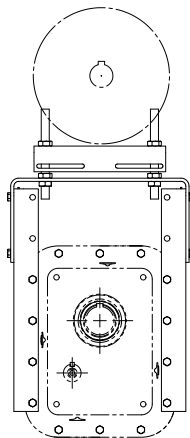
5307 or 5315			
Height	Motor	Sheave < 11"	Sheave < 17"
S	56-215	-	42W
S	254-286	-	48W
S	324-405	48N	48W
M	56-145	-	48W
M	182-286	48N	48W
M	324-405	48N	54
L	56-215	48N	54
L	254-405	-	54

Unit Height:

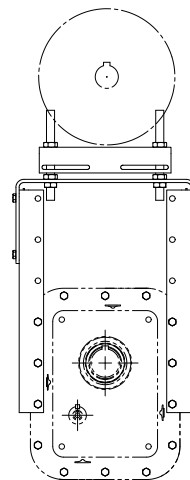
See document 371-110 Falk Quadrive Shaft-Mounted Drives Catalog for maximum and minimum shaft center dimensions for each mounting height and unit size.



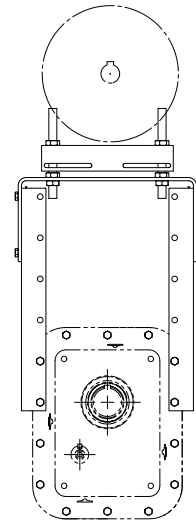
Compact (C)



Small (S)



Medium (M)



Large (L)

Falk Quadrive Belt Guard Update Guide



I am already buying a belt guard, what is my new part number?

Retrofit Guide for Belt Guard

1. Search for the existing belt guard in the **Red columns** (left side)
2. Determine if a wide or normal belt guard is required based on the application sheave diameter
3. If you are currently using a size "14E" note that there are now smaller sizes to choose from

Drive Size	<i>If you were buying this...</i>	<i>If it was too big?...now you can buy this:</i>
	(14E) 13.5 x 42.5 x 5 for sheave dia's ≤ 11"	(28) 12 x 28 x 5 for sheave dia's ≤ 11"
5107	783719	7708137
5115	783723	7708137
5203	783729	7708137

Drive Size	<i>If you were buying this...</i>	<i>...outside dimensions are similar to this:</i>	
	(14E) 13.5 x 42.5 x 5	(36N) 12 x 36 x 5 for sheave dia's ≤ 11"	(36W) 19 x 36 x 5 for sheave dia's ≤ 17"
5107	783719	7708138	7708139
5115	783723	7708138	7708139
5203	783729	7708138	7708139
5207	783737	7708138	7708139
5215	783745	7708138	7708139

Drive Size	<i>If you were buying this...</i>	<i>...outside dimensions are similar to this:</i>	
	(15E) 18.5 x 47.25 x 6	(42N) 14 x 42 x 6 for sheave dia's ≤ 11"	(42W) 19 x 42 x 6 for sheave dia's ≤ 17"
5107	783721	7708140	7708141
5115	783725	7708140	7708141
5203	783731	7708140	7708141
5207	783739	7708140	7708141
5215	783747	7708140	7708141

Drive Size	<i>If you were buying this...</i>	<i>...outside dimensions are similar to this:</i>	
	(16E) 18.5 x 52.12 x 6	(48N) 14 x 48 x 6 for sheave dia's ≤ 11"	(48W) 19 x 48 x 6 for sheave dia's ≤ 17"
5115	783727	*	*
5203	783733	7708142	7708143
5207	783741	7708142	7708143
5215	783749	7708142	7708143
5307	783755	*	7708143
5315	783761	*	7708143

* Consult Factory.

Drive Size	<i>If you were buying this...</i>	<i>...outside dimensions are similar to this:</i>
	(17E) 19.5 x 55.62 x 6 for sheave dia's ≤ 18"	(54) 19 x 54 x 6 for sheave dia's ≤ 17"
5203	783735	7708144
5207	783743	7708144
5215	783751	7708144
5307	783757	7708144
5315	783763	7708144
5203	783729	7708137

Drive Size	<i>If you were buying this...</i>	<i>...outside dimensions are similar to this:</i>
	(19E) 23.5 x 65 x 9.25 for sheave dia's ≤ 23"	(54) 19 x 54 x 6 for sheave dia's ≤ 17"
5215	783753	7708144
5307	783759	7708144
5315	783765	7708144

I need a belt guard to fit my existing motor mount, what is my new part number?

Drive Size	<i>If you have this motor mount...</i>	<i>...you'll need this bracket & hardware to fit a new belt guard:</i>
5107	738714	10612255
	738715	
5115	786773	10613926
	738716	
5203	786108	10613927
	738718	
5207	786176	10613928
	738720	
5215	786261	10613929
	738468	
5307/ 5315	786373	10613930



rexnord.com

Contact us — visit rexnord.com/contact

