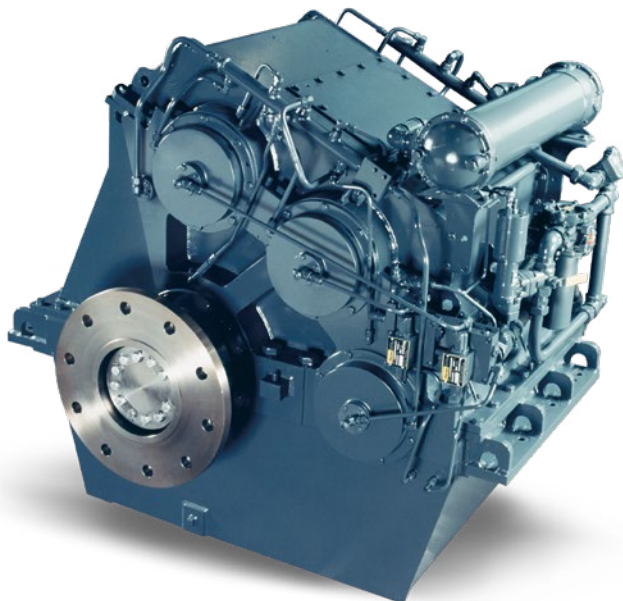


FALK®



FALK® MARINE GEAR DRIVES AND CLUTCHES

OVERVIEW



RegalRexnord™



Falk® Marine Gear Drives and Clutches

WHERE DURABILITY RUNS DEEP

Nowhere is equipment durability more crucial to a company’s survival than on the world’s waterways where crews and schedules depend on reliable power.

For more than 95 years, Falk products have been rewriting the record books for longevity in marine propulsion. From heavy-duty gear sets, clutches and extended-life bearings, to the design and construction of our application-engineered housings, Falk Marine Gear Drives are built to be the most reliable solutions afloat.

That’s why demanding workboat manufacturers, owners and operators rely on Falk Marine Drives and Clutches.

“Reliability and longevity are most important. In the river industry, these gear drives will take a lot of abuse.”

Owner of a towing company

3 THREE YEAR
HEAVY-DUTY
WARRANTY

Regal Rexnord is so confident in the quality and reliability of our Falk products, that we are the only manufacturer offering a three-year heavy-duty warranty standard on all of our marine drives.

Company History

1916

Falk’s marine efforts started in 1916 with a submarine tender for the U.S. Navy.

1939

Falk revolutionized workboat maneuverability with the introduction of reversing reduction gears, and air clutches and drums.

1942

During World War II, Falk provided 16.5 million horsepower-worth of power transmission products for aircraft carriers, cruisers, destroyers and Landing Ship Tanks (LSTs).

1962

Production began on the Falk Marine Reversing Drive (MR) Series. The MR Series dominates the tug and towboat industry in the 1960s and 1970s.

1966

Falk introduced the first commercial gas turbine reduction gear.

1968

Falk powered the largest ore carrier on the Great Lakes — M/V Stewart J. Cort.

1982

Falk increased life with surface-hardened and ground gears and internal hydraulic clutches in the Falk MRH Series.

1987

Falk reduction gears drive the Military Sealift Command’s Fleet Replenishment Oilers (T-AO) and 65,000-horsepower roll-on/roll-off ships.

1995

Falk makes LST Drop-in Replacement Drives available in vertical and horizontal configurations.

2011

Falk introduces Marine Drive (M) and MR gear recuts saving customers up to 40% compared to a completely new gear set.

Falk® MRH Series

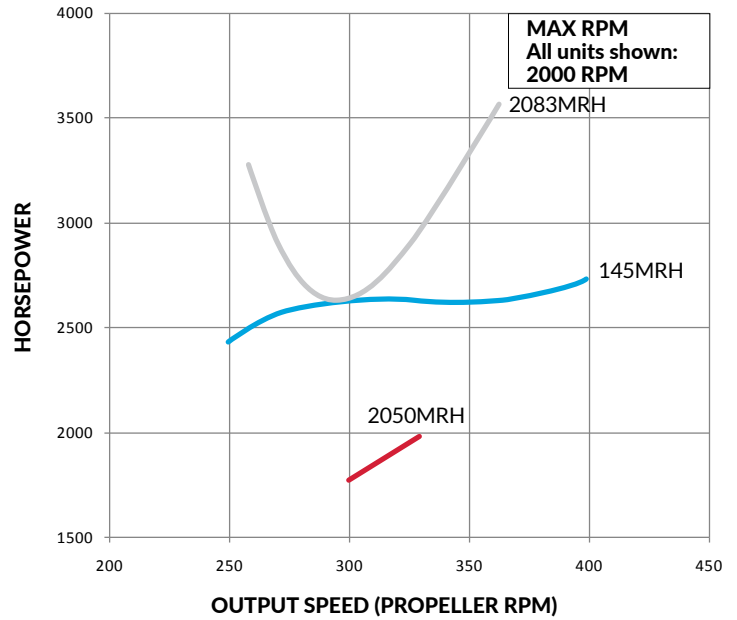
For more than 30 years, Falk Marine Reversing Reduction Drives with Hydraulic Clutches (MRH) have been delivering the same reliable performance and extended operating life customers have come to expect from extensively proven Falk Marine Reversing Drive (MR) Series.

The MRH Series' integral hydraulic clutches and shaft brakes combine to produce the fastest reversing speeds available today, while maintaining smooth engagements and power transfer for more precise, predictable maneuvering.

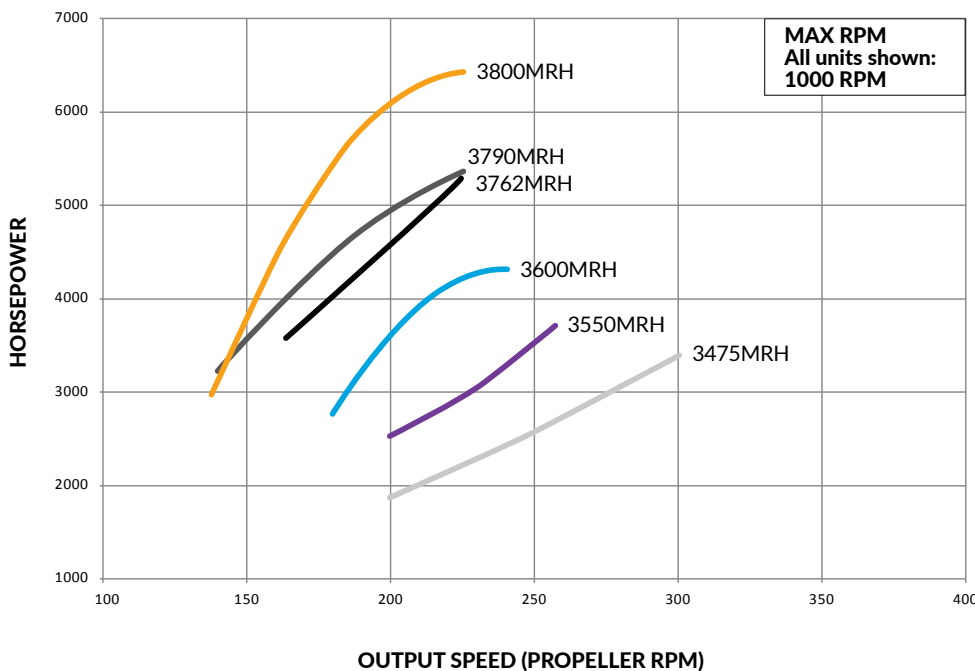
THE MRH SERIES FEATURES:

- Capacities up to 7,500 horsepower
- Ratios from 2:1 to 7.5:1
- Integral hydraulic clutches
- Integral hydraulic shaft brakes
- Surface-hardened, carburized and ground gears
- Configurations with vertical or horizontal offset for port, starboard or vertical assemblies
- Three-year heavy-duty warranty

MRH UNIT HORSEPOWER RATINGS AT 1800 REVOLUTIONS PER MINUTE (RPM) INPUT



MRH UNIT HORSEPOWER RATINGS AT 900 REVOLUTIONS PER MINUTE (RPM) INPUT



3800MRHV Drive



MRH Reversing Reduction Gear Drive



Integral Hydraulic Clutch

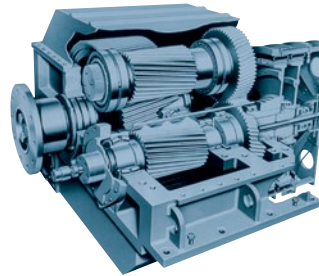
Falk® M & MR Series

The Falk Marine Drive (M) and Marine Reversing Drive (MR) Series have been Working the Water for more than 50 years. Our highly reliable external air clutches and conservative bearing design have allowed vessels to achieve more than 100,000 hours of service.

Today, the M and MR Series continue to set the standard for power transmission longevity in workboats around the world.

THE M AND MR SERIES FEATURE:

- Capacities up to 5,000 horsepower
- Ratios from 2:1 to 8:1
- Service-proven Falk B7B Marine Air Clutches
- Through-hardened, precision ground gears
- Extended-life roller bearings
- Three-year heavy-duty warranty

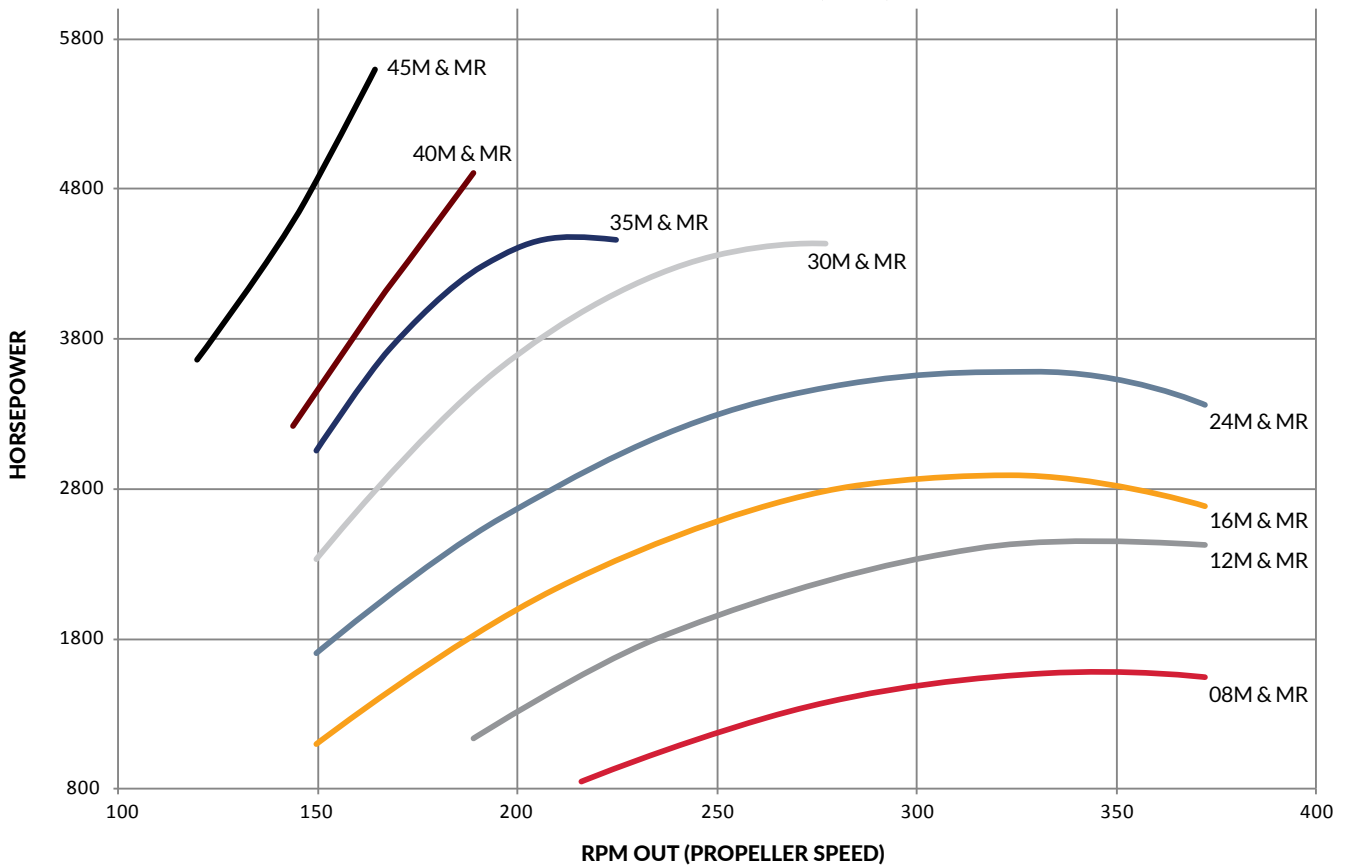


MR Series Unit



B7B Marine Air Clutch

FALK M & MR SERIES HORSEPOWER RATINGS AT 900 REVOLUTIONS PER MINUTE (RPM) INPUT





21MR Marine Drive installed in vessel.

Upgrade your LST Drive with a Drop-in 21MR

In the 1940s, more than 3,000 Falk® Landing Ship Tank (LST) Drives were fitted into landing ship tanks. Today, hundreds of those reliable drives are still in operation on workboats.

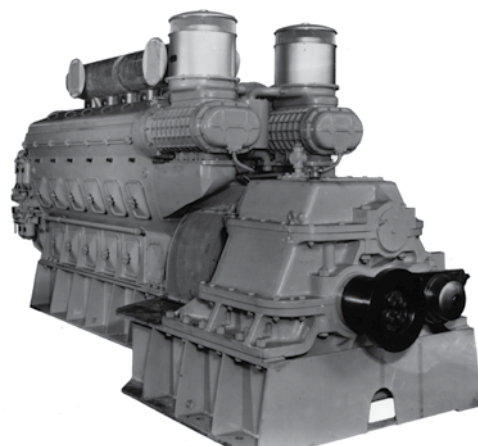
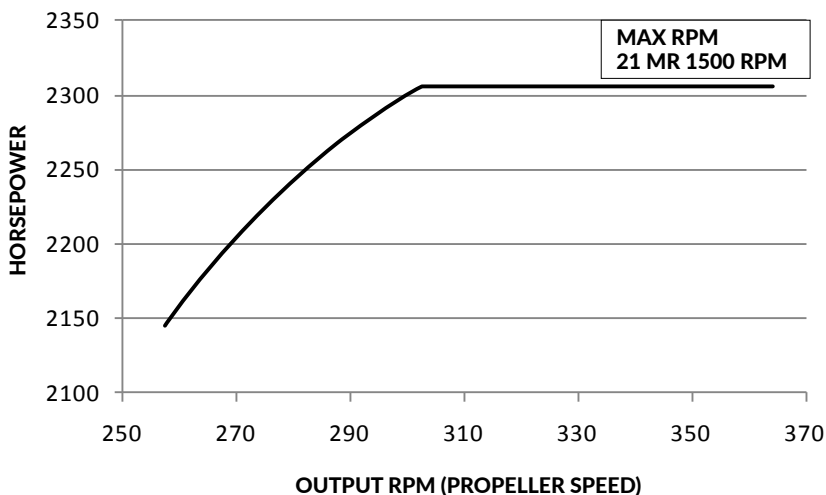
If you have an original LST Drive in your commercial vessel, it is now possible to achieve significantly higher capacity by upgrading your power with a Drop-in Falk 21MR Marine Drive. The Falk 21MR units with B7B Falk Marine Air Clutches deliver that extra push you need, as well as the reliability and long life you expect from a Falk Drive.

Double helical gears provide a tough, quiet drive – without massive modifications to your vessel. Steel housing units (available in vertical, port or starboard configurations) are furnished with ground finish gearing. Like other Falk MR and MRH units, the 21MR comes with our exclusive three-year heavy-duty warranty, outpowering everyone else in the industry.

“I’ve always thought highly of Falk gearboxes. They are manufactured by a solid company with a good reputation.”

Engineering manager of a major towing company

21MR RATING AT 900 REVOLUTIONS PER MINUTE (RPM) INPUT



Original Falk LST Drive

Falk® comes through in the clutch

FALK B7B MARINE AIR CLUTCH

Tested and proven for more than 70 years on thousands of applications, the easily-mounted Falk B7B Marine Air Clutch provides a simple and reliable engine-to-gear connecting mechanism.

The B7B Marine Air Clutch features:

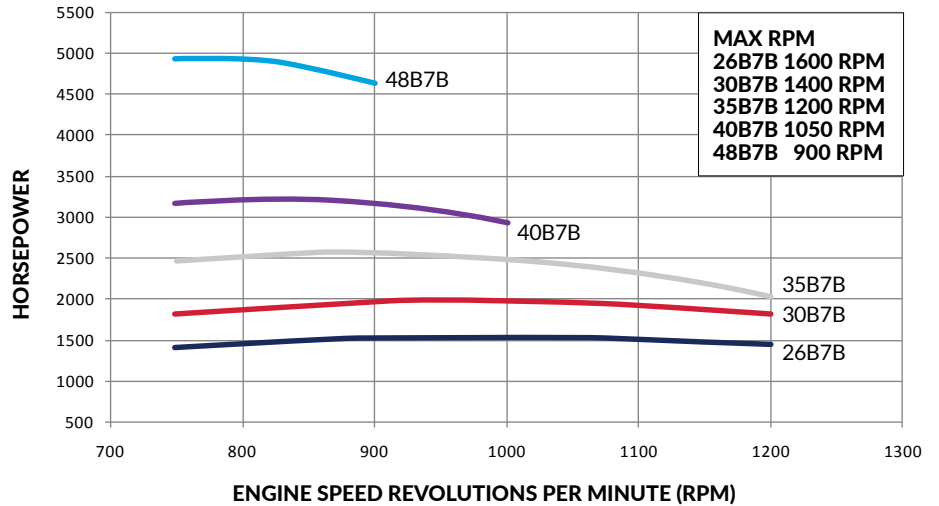
- Dependable operation with excellent torsional vibration absorption
- Fast reversal times and high-cycle shifting
- Continued slip operation for slow speed maneuvering and high-cycle capability
- Enhanced load distribution, smoothness of operation and clutch life
- Automatic and complete disengagement when air pressure is released
- No maintenance (working friction surfaces are only parts subject to wear)
- Cushioning of shock loads and accommodation of reasonable amounts of shaft misalignment
- Positively regulated engagement and disengagement
- Balanced to ISO 1940-1 Grade 16

“When it comes to quality, you can’t beat Falk.”

Owner of a marine services company

FALK B7B MARINE AIR CLUTCH POWER RATING AT 140 POUNDS PER SQUARE INCH (PSI)

(Email falkmarine@rexnord.com for selection support and assistance for ratings at other speeds and pressures.)



B7B Marine Air Clutch

3 THREE YEAR HEAVY-DUTY WARRANTY

Regal Rexnord also offers its three-year heavy-duty warranty on the B7B Marine Air Clutch.

The friction lining on the B7B Marine Air Clutch is riveted to a ductile aluminum vented shoe which is held to the inner diameter of the gland with pins. Our friction linings exhibit additional consistent engagements under varying conditions, maintaining high coefficients of friction against our cast steel drums.



Falk® genuine parts

INSIST ON GENUINE FALK QUALITY FOR ALL YOUR REPLACEMENT COMPONENTS

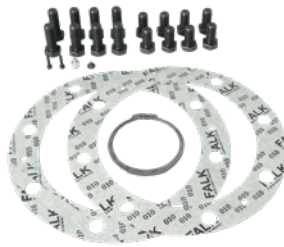
When it's time to repair, operators and port engineers demand OEM components that maintain the legendary reliability of their M, MR, MRH or custom reduction gears.

Falk genuine parts include:

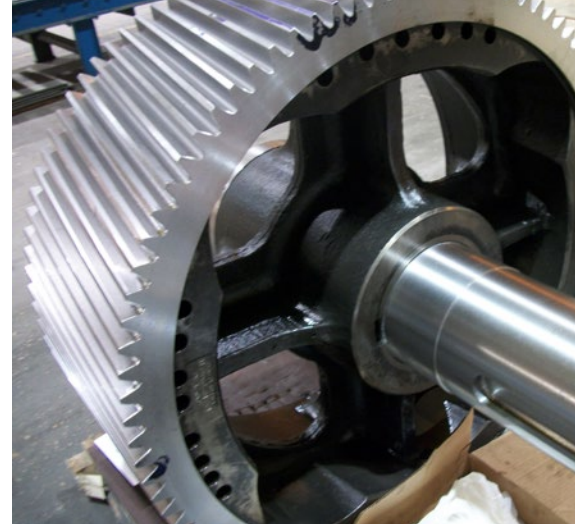
- Precision ground gear elements
- OEM bearings
- B7B marine air clutches
- Cast steel clutch rims
- Clutch spacers
- OEM air shafts
- OEM pilot bearing assemblies
- Hardware and gaskets



OEM Pilot Bearing Assemblies



Hardware and Gaskets



MR re-cut low speed gear at shipping.



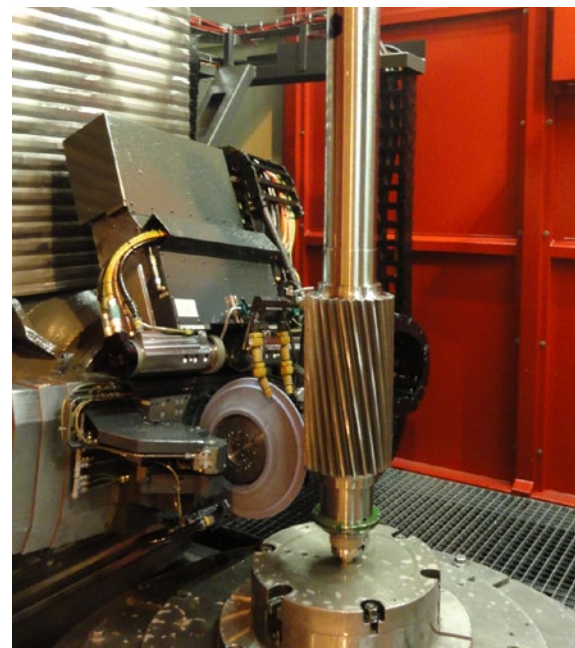
MR re-cut low speed gear at finish grind.

"I am really impressed with the dimensional accuracy, quality and appearance of the Falk clutches."

Manager at a stocking distributor



Falk M and MR gear re-cuts can save up to 40% compared to a completely new gear set.



New main pinion at finish grind.

FALK®

Motion Control Solutions Regal Rexnord

Contact us: [regalrexnord.com/contact](https://www.regalrexnord.com/contact)

[regalrexnord.com](https://www.regalrexnord.com)

The proper selection and application of products and components, including assuring that the product is safe for its intended use, are the responsibility of the customer. To view our Application Considerations, please visit <https://www.regalrexnord.com/Application-Considerations>. To view our Standard Terms and Conditions of Sale, please visit <https://www.regalrexnord.com/Terms-and-Conditions-of-Sale> (which may redirect to other website locations based on product family).

"Regal Rexnord" is not indicative of legal entity. Refer to product purchase documentation for the applicable legal entity.
Regal Rexnord and Falk are trademarks of Regal Rexnord Corporation or one of its affiliated companies.
© 2012, 2022 Regal Rexnord Corporation, All Rights Reserved. MCB22132E • Form# GR1-014E

 **RegalRexnord**